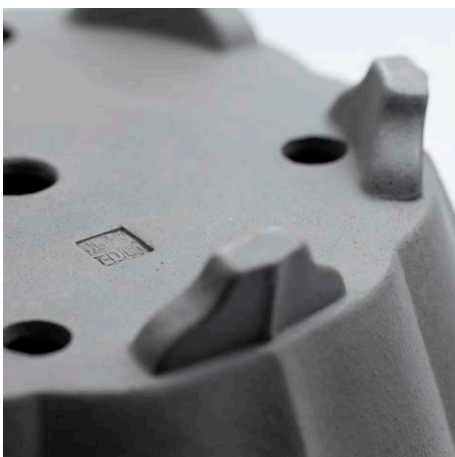


# 常滑焼

TOKONAME BONSAI POTS

Catalog 2020





## IKKO

( Kazuhiro Watanabe )

KANESHO SEITOSHO / 2nd generation / Founded in 1972

---

### Creating good quality of clay and making a pot with character

Since childhood I grew up watching my fathers, SHOZAN, bonsai pot making, and I started to make Moulded, Slab Building, Coil forming and Thrown.

I thought that I wanted to establish a genre different from my father SHOZAN who was good at large items and focused mainly on making small bonsai pots.

Now that the good pots of “KOWATARI” are decreasing, the most important thing is to make good pots with character. To that end, he says he is concentrating on finishing, paying close attention to creating work with good taste.

The work which reproduced Chinese old pots made with such high technical power is also popular with bonsai enthusiasts for its ease of use and high completeness and is often used in exhibitions.

The masterpiece is a rectangular pot with cloud feet made from red clay with glossiness which is different from red clay characterized by sharpness of shape as well as with character.

The oval bonsai pots made from white clay which complements the trees with a gentle form becomes especially wonderful when the aged.

IK01

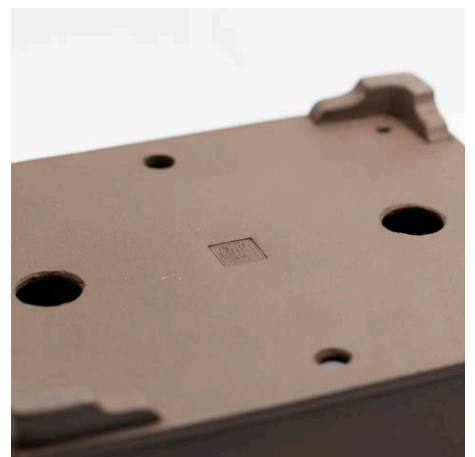
Rectangle outer edge pots  
with bottom-belt

Clay Type : Purple Clay

Glaze Type : Unglazed

Retail Price : JPY46,250

Size : W270 x D240 x H85mm





## ■Catalog Information

---

### ■About orders

When ordering, please specify the product number, size, color and quantity. If there is no stock, it takes time for delivery, please contact us for details.

We also accept orders for special orders, please feel free to ask me.

### ■About size and color

Size and color may differ from what is shown. Please be forewarned.

### ■About Shipping and Duties.

Shipping, duties and packing costs will be charged separately.

### ■About price display

The list price is the retail price. The listed price does not include shipping costs. Prices are subject to change without notice.

### ■Catalog expiration date

2020.4.1~2021.3.31

## Contact information

---

### **Tokonameyaki Cooperative Association**

3-8 Sakaemachi, Tokoname city, Aichi, 479-0836

WEB : [tokonamebonsaipots.com](http://tokonamebonsaipots.com)

Mail : [contact@tokonamebonsaipots.com](mailto:contact@tokonamebonsaipots.com)  
[info@tokonameyaki.or.jp](mailto:info@tokonameyaki.or.jp)



## **Orders and Inquiries**

---

contact@tokonamebonsaipots.com  
info@tokonameyaki.or.jp

## **Website to know our philosophy**

tokonamebonsaipots.com

## **Produce and Management**

### **Tokonameyaki Cooperative Association**

3-8 Sakaemachi, Tokoname city, Aichi  
479-0836, Japan

常滑焼

TOKONAME BONSAI POTS